



Pony Testing International Group

报告编号(Report ID): I04013021421D~1

# 锂电池 UN38.3 测试报告

## Lithium Battery UN38.3 Test Report

Sample Description  
& Model Cylindrical Lithium-ion Battery F<sup>®</sup>18650 2500

Applicant First New Energy Co., Ltd

Manufacturer First New Energy Co., Ltd

P O N Y 谱尼测试  
Pony Testing International Group  
www.ponytest.com

No.: I04013021421D  
Code: qb2027





Pony Testing International Group

## I、SAMPLE DESCRIPTION

Sample Description	Cylindrical Lithium-ion Battery		Sample Model	F®18650 2500	
Applicant	First New Energy Co., Ltd				
Manufacturer	First New Energy Co., Ltd				
Nominal Voltage	3.7V	Rated Capacity	2500mAh	Limited Charge Voltage	4.2V
Charge Current	2500mA	Maximum Continuous Charge Current	2500mA	End Charge Current	25mA
Cut-off Voltage	2.75V	Maximum Discharge Current	2500mA	Use	Tablet PC
Cells Number	1PCS	Cell Model	F®18650 2500	Cell Capacity	2500mAh
Manufacturer of cell	First New Energy Co., Ltd				
Chemical component	LiNiCoMnO <sub>2</sub> , Graphite, Cuppor Foil, Alummiun Foil etc.				
Client date	2014-03-20		Finished date	2014-04-10	

## II、REFERENCE METHOD

《United Nations Recommendations On The Transport Of Dangerous Goods, Manual Of Tests And Criteria》  
(ST/SG/AC.10/11/Rev.5/Amend.1 & ST/SG/AC.10/11/Rev.5/Amend.2).

## III、TEST ITEM

- |                        |                           |
|------------------------|---------------------------|
| 1. Altitude simulation | 5. External short circuit |
| 2. Thermal test        | 6. Impact                 |
| 3. Vibration           | 7. Overcharge             |
| 4. Shock               | 8. Forced discharge       |

## IV、CONCLUSION

ITEM	SAMPLE NUMBER	STANDARD	CONCLUSION
Altitude simulation	N1~N10	UN38.3	PASS
Thermal test			PASS
Vibration			PASS
Shock			PASS
External short circuit			PASS
Impact	N11~N15		PASS
Overcharge	---		N/A (Not applicable)
Forced discharge	N16~N25 C1~C10		PASS

The submitted battery and component cell were complied with the UN Manual of Tests and Criteria, Part III, sub-section 38.3.

Prepared by: *Linchaitin* Checked by: *chengpeng* Approved by: *liyong*

Issue Date: April 10, 2014



Pony Testing International Group

### Notes:

N1~N10: Cells at first cycle in fully charged states;

N11~N15: Cells at first cycle at 50% of the design rated capacity;

N16~N25: Cells at first cycle in fully discharged states;

C1~C10: Cells after 50 cycles ending in fully discharged states.

### V、PHOTO OF THE SAMPLE



Authenticate the photo on original report only

www.ponytest.com ©Hotline 400-819-5688

Add: 北京市海淀区苏州街49-3号盈智大厦	Add: 上海市徐汇区桂平路680号35号楼4层	Add: 深圳市南山区创业路中兴工业城6栋1层	Add: 青岛市崂山区株洲路190号6层
Tel: (010) 82618116	Tel: (021) 64851999	Tel: (0755) 26050909	Tel: (0532) 88706866
Add: 天津市南开区红旗路嘉泰大厦10层	Add: 宁波市高新区新晖路150号二期4号楼4层	Add: 广州市海珠区敦和路189号海珠科技园3号楼7层	
Tel: (022) 27360730	Tel: (0574) 87736499	Tel: (020) 89224310	



Pony Testing International Group

## VI. TEST METHOD

Tests T.1 to T.5 shall be conducted in sequence on the same cell or battery. Tests T.6 and T.8 shall be conducted using not otherwise tested cells or batteries. Test T.7 may be conducted using undamaged batteries previously used in tests T.1 to T.5 for purposes of testing on cycled batteries.

In order to quantify the mass loss, the following procedure is provided:

$$\text{Mass loss(\%)} = (M_1 - M_2) / M_1 \times 100$$

Where  $M_1$  is the mass before the test and  $M_2$  is the mass after the test. When mass loss does not exceed the values in Table blow, it shall be considered as "no mass loss".

Mass M of cell or battery	Mass loss limit
$M < 1g$	0.5%
$1g \leq M \leq 75g$	0.2%
$M > 75g$	0.1%

### T.1 Altitude simulation

Test cells and batteries shall be stored at a pressure of 11.6 kPa or less for at least six hours at ambient temperature ( $20 \pm 5^\circ\text{C}$ ).

Cells and batteries meet this requirement if there is no leakage, no venting, no disassembly, no rupture and no fire and if the open circuit voltage of each test cell or battery after testing is not less than 90% of its voltage immediately prior to this procedure. The requirement relating to voltage is not applicable to test cells and batteries at fully discharged states.

### T.2 Thermal test

Test cells and batteries are to be stored for at least six hours at a test temperature equal to  $72 \pm 2^\circ\text{C}$ , followed by storage for at least six hours at a test temperature equal to  $-40 \pm 2^\circ\text{C}$ . The maximum time interval between test temperature extremes is 30 minutes. This procedure is to be repeated until 10 total cycles are complete, after which all test cells and batteries are to be stored for 24 hours at ambient temperature ( $20 \pm 5^\circ\text{C}$ ). For large cells and batteries the duration of exposure to the test temperature extremes should be at least 12 hours.

Cells and batteries meet this requirement if there is no leakage, no venting, no disassembly, no rupture and no fire and if the open circuit voltage of each test cell or battery after testing is not less than 90% of its voltage immediately prior to this procedure. The requirement relating to voltage is not applicable to test cells and batteries at fully discharged states.

www.ponytest.com Hotline 400-819-5688

Add: 北京市海淀区苏州街49-3号盈智大厦	上海市徐汇区桂平路686号35号楼4层	深圳市南山区创业路中兴工业城6栋1层	青岛市崂山区株洲路190号6层
Tel: (010) 82618116	(021) 64851999	(0755) 26050909	(0532) 68706966
Add: 天津市南开区红旗路赢宾大厦10层	宁波市高新区新明路150号二期4号楼4层	广州市海珠区敦和路189号海珠科技园3号楼7层	
Tel: (022) 27360730	(0574) 87736499	(020) 89224310	



Pony Testing International Group

### T.3 Vibration

Cells and batteries are firmly secured to the platform of the vibration machine without distorting the cells in such a manner as to faithfully transmit the vibration. The vibration shall be a sinusoidal waveform with a logarithmic sweep between 7 Hz and 200 Hz and back to 7 Hz traversed in 15 minutes. This cycle shall be repeated 12 times for a total of 3 hours for each of three mutually perpendicular mounting positions of the cell. One of the directions of vibration must be perpendicular to the terminal face.

The logarithmic frequency sweep shall differ for cells and batteries with a gross mass of not more than 12 kg (cells and small batteries), and for batteries with a gross mass of more than 12 kg (large batteries).

For cells and small batteries: from 7 Hz a peak acceleration of 1  $g_n$  is maintained until 18 Hz is reached. The amplitude is then maintained at 0.8 mm (1.6 mm total excursion) and the frequency increased until a peak acceleration of 8  $g_n$  occurs (approximately 50 Hz).

A peak acceleration of 8  $g_n$  is then maintained until the frequency is increased to 200 Hz.

For large batteries: from 7 Hz to a peak acceleration of 1  $g_n$  is maintained until 18 Hz is reached. The amplitude is then maintained at 0.8 mm (1.6 mm total excursion) and the frequency increased until a peak acceleration of 2  $g_n$  occurs (approximately 25 Hz). A peak acceleration of 2  $g_n$  is then maintained until the frequency is increased to 200 Hz.

Cells and batteries meet this requirement if there is no leakage, no venting, no disassembly, no rupture and no fire during the test and after the test and if the open circuit voltage of each test cell or battery directly after testing in its third perpendicular mounting position is not less than 90% of its voltage immediately prior to this procedure. The requirement relating to voltage is not applicable to test cells and batteries at fully discharged states.

### T.4 Shock

Test cells and batteries shall be secured to the testing machine by means of a rigid mount which will support all mounting surfaces of each test battery. Each cell or battery shall be subjected to a half-sine shock of peak acceleration of 150  $g_n$  and pulse duration of 6 milliseconds. Each cell or battery shall be subjected to three shocks in the positive direction followed by three shocks in the negative direction of three mutually perpendicular mounting positions of the cell or battery for a total of 18 shocks.

However, large cells and large batteries shall be subjected to a half-sine shock of peak acceleration of 50  $g_n$  and pulse duration of 11 milliseconds. Each cell or battery is subjected to three shocks in the positive direction followed by three shocks in the negative direction of each of three mutually perpendicular mounting positions of the cell for a total of 18 shocks.

www.ponytest.com Hotline 400-819-5688

Add: 北京市海淀区苏州街49-3号盈智大厦	Add: 上海市徐汇区桂平路680号35号楼4层	Add: 深圳市南山区创业路中兴工业城6栋1层	Add: 青岛市崂山区株洲路190号6层
Tel: (010) 82618116	Tel: (021) 64851999	Tel: (0755) 28050909	Tel: (0532) 88706866
Add: 天津市南开区红康路富寰大厦10层	Add: 宁波市高新区新晖路150号二期4号楼4层	Add: 广州市海珠区敦和路189号海珠科技园3号楼7层	
Tel: (022) 27360730	Tel: (0574) 87736499	Tel: (020) 89224310	



Pony Testing International Group

Cells and batteries meet this requirement if there is no leakage, no venting, no disassembly, no rupture and no fire and if the open circuit voltage of each test cell or battery after testing is not less than 90% of its voltage immediately prior to this procedure. The requirement relating to voltage is not applicable to test cells and batteries at fully discharged states.

#### T.5 External short circuit

The cell or battery to be tested shall be temperature stabilized so that its external case temperature reaches  $55 \pm 2$  °C and then the cell or battery shall be subjected to a short circuit condition with a total external resistance of less than 0.1 ohm at  $55 \pm 2$  °C. This short circuit condition is continued for at least one hour after the cell or battery external case temperature has returned to  $55 \pm 2$  °C.

Cells and batteries meet this requirement if their external temperature does not exceed 170 °C and there is no disassembly, no rupture and no fire during the test and within six hours after the test.

#### T.6 Impact / Crush

Impact (applicable to cylindrical cells not less than 18 mm in diameter)

The sample cell or component cell is to be placed on a flat smooth surface. A 15.8 mm  $\pm$  0.1mm diameter, at least 6 cm long, or the longest dimension of the cell, whichever is greater, Type 316 stainless steel bar is to be placed across the centre of the sample. A 9.1 kg  $\pm$  0.1 kg mass is to be dropped from a height of 61  $\pm$  2.5 cm at the intersection of the bar and sample in a controlled manner using a near frictionless, vertical sliding track or channel with minimal drag on the falling mass. The vertical track or channel used to guide the falling mass shall be oriented 90 degrees from the horizontal supporting surface.

The test sample is to be impacted with its longitudinal axis parallel to the flat surface and perpendicular to the longitudinal axis of the 15.8 mm  $\pm$  0.1mm diameter curved surface lying across the centre of the test sample. Each sample is to be subjected to only a single impact.

Crush (applicable to prismatic, pouch, coin/button cells and cylindrical cells less than 18 mm in diameter)

A cell or component cell is to be crushed between two flat surfaces. The crushing is to be gradual with a speed of approximately 1.5 cm/s at the first point of contact. The crushing is to be continued until the first of the three options below is reached.

- The applied force reaches 13 kN  $\pm$  0.78 kN;
- The voltage of the cell drops by at least 100 mV; or
- The cell is deformed by 50% or more of its original thickness.

Once the maximum pressure has been obtained, the voltage drops by 100 mV or more, or the cell is deformed by at least 50% of its original thickness, the pressure shall be released.

www.ponytest.com Hotline 400-819-5688

Add: 北京市海淀区苏州街49-3号盈智大厦	上海市徐汇区桂平路680号35号楼4层	深圳市南山区创业路中兴工业城6栋1层	青岛市崂山区株洲路190号6层
Tel: (010) 82618116	(021) 64851999	(0755) 28050909	(0532) 88706866
Add: 天津市南开区红旗路赢富大厦10层	宁波市高新区新晖路150号二期4号楼4层	广州市海珠区敦和路189号海珠科技园3号楼7层	
Tel: (022) 27360730	(0574) 87736499	(020) 89224310	



Pony Testing International Group

A prismatic or pouch cell shall be crushed by applying the force to the widest side. A button/coin cell shall be crushed by applying the force on its flat surfaces. For cylindrical cells, the crush force shall be applied perpendicular to the longitudinal axis.

Each test cell or component cell is to be subjected to one crush only. The test sample shall be observed for a further 6 h. The test shall be conducted using test cells or component cells that have not previously been subjected to other tests.

Cells and component cells meet this requirement if their external temperature does not exceed 170 °C and there is no disassembly and no fire during the test and within six hours after this test.

#### T.7 Overcharge

The charge current shall be twice the manufacturer's recommended maximum continuous charge current. The minimum voltage of the test shall be as follows:

- (a) When the manufacturer's recommended charge voltage is not more than 18V, the minimum voltage of the test shall be the lesser of two times the maximum charge voltage of the battery or 22V.
- (b) When the manufacturer's recommended charge voltage is more than 18V, the minimum voltage of the test shall be 1.2 times the maximum charge voltage.

Tests are to be conducted at ambient temperature; the duration of the test shall be 24 hours.

Rechargeable batteries meet this requirement if there is no disassembly and no fire during the test and within seven days after the test.

#### T.8 Forced discharge

Each cell shall be forced discharged at ambient temperature by connecting it in series with a 12V D.C. power supply at an initial current equal to the maximum discharge current specified by the manufacturer.

The specified discharge current is to be obtained by connecting a resistive load of the appropriate size and rating in series with the test cell. Each cell shall be forced discharged for a time interval (in hours) equal to its rated capacity divided by the initial test current (in ampere).

Primary or rechargeable cells meet this requirement if there is no disassembly and no fire during the test and within seven days after the test.

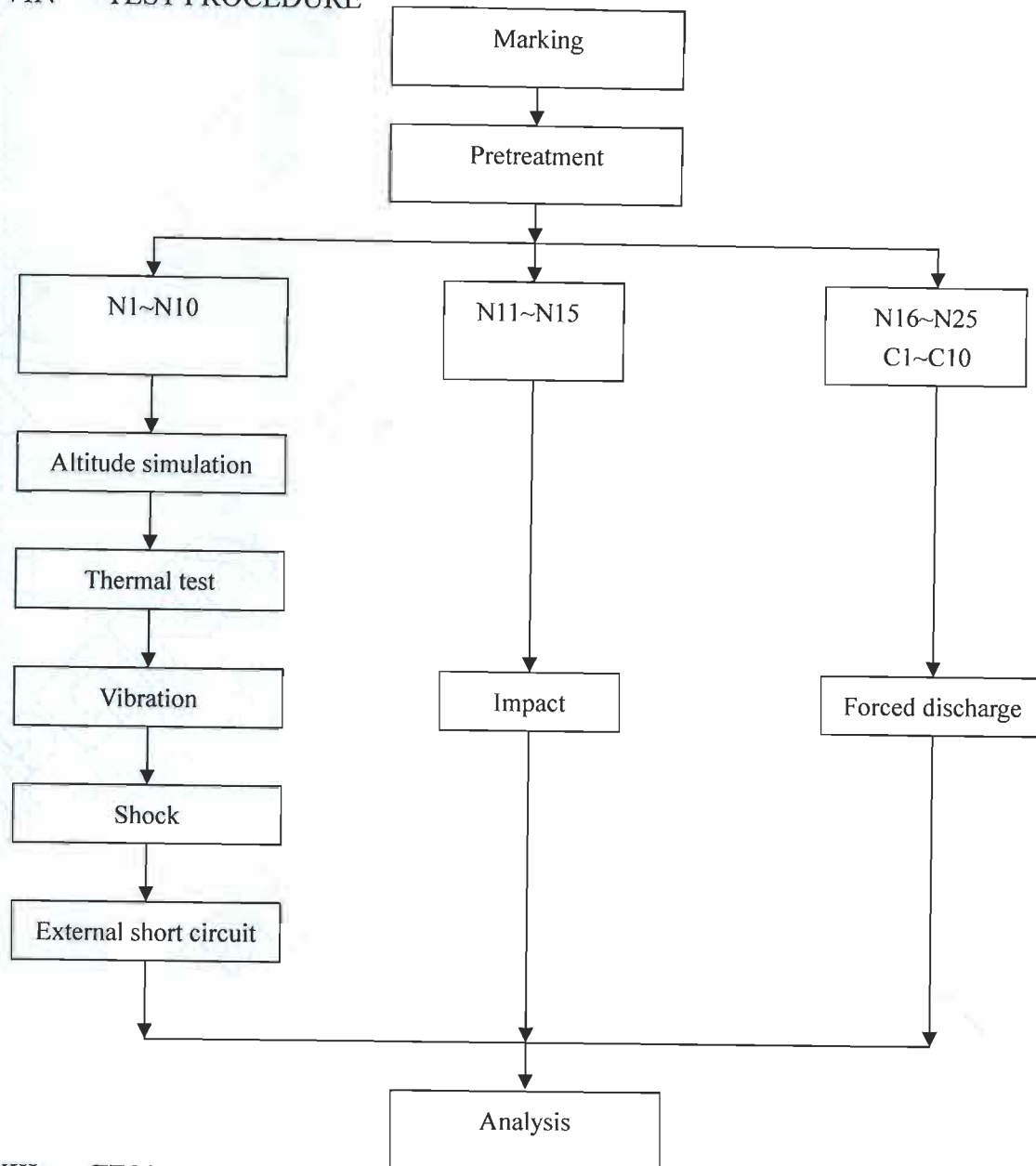
www.ponytest.com Hotline 400-819-5688

Add: 北京市海淀区苏州街49-3号盈智大厦	Add: 上海市徐汇区桂平路680号35号楼4层	Add: 深圳市南山区创业路中兴工业城6栋1层	Add: 青岛市崂山区株洲路190号6层
Tel: (010) 82618116	Tel: (021) 64851999	Tel: (0755) 26050909	Tel: (0532) 88706866
Add: 天津市南开区红旗路赢富大厦10层	Add: 宁波市高新区新晖路150号二期4号楼4层	Add: 广州市海珠区敦和路189号海珠科技园3号楼7层	
Tel: (022) 27360730	Tel: (0574) 87736499	Tel: (020) 89224310	



Pony Testing International Group

## VII、 TEST PROCEDURE



## VIII、 TEST APPARATUS

IE-0121 Rechargeable battery test system  
 IE-0294 DC regulated power supply  
 IE-0434 Vacuum chamber  
 IE-0081 Battery impact test instrument  
 IE-0219 Temperature circulation chamber  
 IE-0125 Electronic balance

IE-0128 Vibration test instrument  
 IE-0090 Digital multimeter  
 IE-0287 Shock test instrument  
 IE-0185 Thermoelectric pair  
 IE-0281 Battery anti-explosion chamber

www.ponytest.com Hotline 400-819-5688

Add: 北京市海淀区苏州街19-3号盈智大厦	Add: 上海市徐汇区桂平路680号35号楼4层	Add: 深圳市南山区创业路中兴工业城6栋1层	Add: 青岛市崂山区株洲路190号6层
Tel: (010) 82618116	Tel: (021) 64851999	Tel: (0755) 26050909	Tel: (0532) 88706866
Add: 天津市南开区红旗路嘉寰大厦10层	Add: 宁波市高新区新辉路150号二期4号楼4层	Add: 广州市海珠区敦和路189号海珠科技园3号楼7层	
Tel: (022) 27360730	Tel: (0574) 87736499	Tel: (020) 89224310	





Pony Testing International Group

## IX、 DATA

## 1. Altitude simulation

No.	Pre-test		After test		Mass loss (%)	Voltage loss (%)	Whether leakage, venting, disassembly, rupture, fire (Y/N)
	Mass (g)	Voltage (V)	Mass (g)	Voltage (V)			
N1	46.819	4.17	46.819	4.17	0.000	0.00	N
N2	45.948	4.17	45.948	4.17	0.000	0.00	N
N3	45.127	4.17	45.127	4.17	0.000	0.00	N
N4	45.571	4.18	45.570	4.18	0.002	0.00	N
N5	45.900	4.17	45.900	4.17	0.000	0.00	N
N6	45.573	4.18	45.573	4.17	0.000	0.24	N
N7	46.208	4.17	46.208	4.17	0.000	0.00	N
N8	46.307	4.17	46.307	4.17	0.000	0.00	N
N9	45.555	4.17	45.555	4.17	0.000	0.00	N
N10	46.166	4.17	46.166	4.17	0.000	0.00	N

## 2. Thermal test

No.	Pre-test		After test		Mass loss (%)	Voltage loss (%)	Whether leakage, venting, disassembly, rupture, fire (Y/N)
	Mass (g)	Voltage (V)	Mass (g)	Voltage (V)			
N1	46.819	4.17	46.806	4.12	0.028	1.20	N
N2	45.948	4.17	45.934	4.12	0.030	1.20	N
N3	45.127	4.17	45.113	4.12	0.031	1.20	N
N4	45.570	4.18	45.557	4.13	0.029	1.20	N
N5	45.900	4.17	45.885	4.12	0.033	1.20	N
N6	45.573	4.17	45.561	4.13	0.026	0.96	N
N7	46.208	4.17	46.194	4.12	0.030	1.20	N
N8	46.307	4.17	46.296	4.13	0.024	0.96	N
N9	45.555	4.17	45.540	4.12	0.033	1.20	N
N10	46.166	4.17	46.151	4.12	0.032	1.20	N

www.ponytest.com ©Hotline 400-819-5688

Add: 北京市海淀区苏州街49-3号盈智大厦 Tel: (010) 82618116	Add: 上海市徐汇区桂平路688号35号楼4层 Tel: (021) 64851999	Add: 深圳市南山区创业路中兴工业城6栋1层 Tel: (0755) 26050909	Add: 青岛市崂山区株洲路190号6层 Tel: (0532) 88706866
Add: 天津市南开区红旗路赢鑫大厦10层 Tel: (022) 27360730	Add: 宁波市高新区新晖路150号二期4号楼4层 Tel: (0574) 87736499	Add: 广州市海珠区敦和路189号海珠科技园3号楼7层 Tel: (020) 89224310	



Pony Testing International Group

## 3. Vibration

No.	Pre-test		After test		Mass loss (%)	Voltage loss (%)	Whether leakage, venting, disassembly, rupture, fire (Y/N)
	Mass (g)	Voltage (V)	Mass (g)	Voltage (V)			
N1	46.806	4.12	46.806	4.12	0.000	0.00	N
N2	45.934	4.12	45.934	4.12	0.000	0.00	N
N3	45.113	4.12	45.113	4.12	0.000	0.00	N
N4	45.557	4.13	45.556	4.12	0.002	0.24	N
N5	45.885	4.12	45.885	4.12	0.000	0.00	N
N6	45.561	4.13	45.561	4.13	0.000	0.00	N
N7	46.194	4.12	46.193	4.12	0.002	0.00	N
N8	46.296	4.13	46.296	4.12	0.000	0.24	N
N9	45.540	4.12	45.540	4.12	0.000	0.00	N
N10	46.151	4.12	46.151	4.12	0.000	0.00	N

## 4. Shock

No.	Pre-test		After test		Mass loss (%)	Voltage loss (%)	Whether leakage, venting, disassembly, rupture, fire (Y/N)
	Mass (g)	Voltage (V)	Mass (g)	Voltage (V)			
N1	46.806	4.12	46.806	4.12	0.000	0.00	N
N2	45.934	4.12	45.934	4.12	0.000	0.00	N
N3	45.113	4.12	45.113	4.12	0.000	0.00	N
N4	45.556	4.12	45.556	4.12	0.000	0.00	N
N5	45.885	4.12	45.884	4.12	0.002	0.00	N
N6	45.561	4.13	45.561	4.12	0.000	0.24	N
N7	46.193	4.12	46.193	4.12	0.000	0.00	N
N8	46.296	4.12	46.295	4.11	0.002	0.24	N
N9	45.540	4.12	45.540	4.12	0.000	0.00	N
N10	46.151	4.12	46.151	4.12	0.000	0.00	N

www.ponytest.com Hotline 400-819-5688

Add: 北京市海淀区苏州街49-3号盈智大厦 (010) 82618116  
 上海市徐汇区桂平路680号35号楼4层 (021) 64851999  
 深圳市南山区创业路中兴工业城6栋1层 (0755) 26050909  
 青岛市崂山区株洲路190号6层 (0532) 88706866

Add: 天津市南开区红旗路鑫鑫大厦10层 (022) 27360730  
 宁波市高新区新晖路150号二期4号楼4层 (0574) 87736499  
 广州市海珠区敦和路189号海珠科技园3号楼7层 (020) 89224310



Pony Testing International Group

### 5. External short circuit

No.	Peak temperature (°C)	Whether disassembly, rupture, fire (Y/N)
N1	88	N
N2	86	N
N3	91	N
N4	87	N
N5	88	N
N6	92	N
N7	89	N
N8	86	N
N9	88	N
N10	90	N

### 6. Impact

No.	Peak temperature (°C)	Whether disassembly, fire (Y/N)
N11	99	N
N12	91	N
N13	97	N
N14	95	N
N15	93	N

### 7. Overcharge

N/A

www.ponytest.com ©Hotline 400-819-5688

Add: 北京市海淀区苏州街49-3号盈智大厦	Add: 上海市徐汇区桂平路680号35号楼4层	Add: 深圳市南山区创业路中兴工业城5栋1层	Add: 青岛市崂山区株洲路190号6层
Tel: (010) 82618116	Tel: (021) 64851999	Tel: (0755) 26050909	Tel: (0532) 88706866
Add: 天津市南开区红康路赢赛大厦10层	Add: 宁波市高新区新甬路150号二期4号楼4层	Add: 广州市海珠区敦和路189号海珠科技园3号楼7层	
Tel: (022) 27360730	Tel: (0574) 87736499	Tel: (020) 89224310	



Pony Testing International Group

8. Forced discharge

No.	Whether disassembly, fire (Y/N)
N16	N
N17	N
N18	N
N19	N
N20	N
N21	N
N22	N
N23	N
N24	N
N25	N
C1	N
C2	N
C3	N
C4	N
C5	N
C6	N
C7	N
C8	N
C9	N
C10	N

\*\*\* End of report \*\*\*

www.ponytest.com Hotline 400-819-5688

Add: 北京市海淀区苏州街49-3号盈智大厦  
Tel: (010) 82618116

Add: 上海市徐汇区桂平路680号35号楼4层  
Tel: (021) 64851999

Add: 深圳市南山区创业路中兴工业城6栋1层  
Tel: (0755) 26050909

Add: 青岛市崂山区株洲路190号6层  
Tel: (0532) 88706866

Add: 天津市南开区红唐路赢寰大厦10层  
Tel: (022) 27360730

Add: 宁波市高新区新晖路150号二期4号楼4层  
Tel: (0574) 87736499

Add: 广州市海珠区敦和路189号海珠科技园3号楼7层  
Tel: (020) 89224310